

2010

- COMMUNITY PARTNERSHIPS
- LOCAL FOOD PRODUCTION

2020

- METROFITTING OF CITY STRUCTURES
- NEW KNOWLEDGE
- PSYCHOLOGICAL PREPARATION

2030

- NEW CULTURAL ECONOMIES
- GOVERNANCE TOWARDS SUSTAINMENT
- METABOLIC CITIES

TRANSFORMATIVE AGENDA

THINK RELATIONALLY

RE-DIRECT DESIGN

NON-LINEAR ANALYSIS

ENGAGE WITH THE PSYCHOLOGICAL

PRE-EMPTIVE COMMUNITY ENGAGEMENT

avior and new ways of applying that knowledge to the design of cultural practices.  
 It is now widely recognized that great changes must be made in the American way of life. Not only can we not face the rest of the world while consuming and polluting as we do, we cannot for long face ourselves while acknowledging the violence and chaos in which we live. The choice is clear: either we do nothing and allow a miserable and probably catastrophic future to overtake us, or we use our knowledge about human behavior to create a social environment in which we shall live productive and creative lives and do so without jeopardizing the chances that those who follow us will be able to do the same. Something like a Walden Two would not be a bad start.

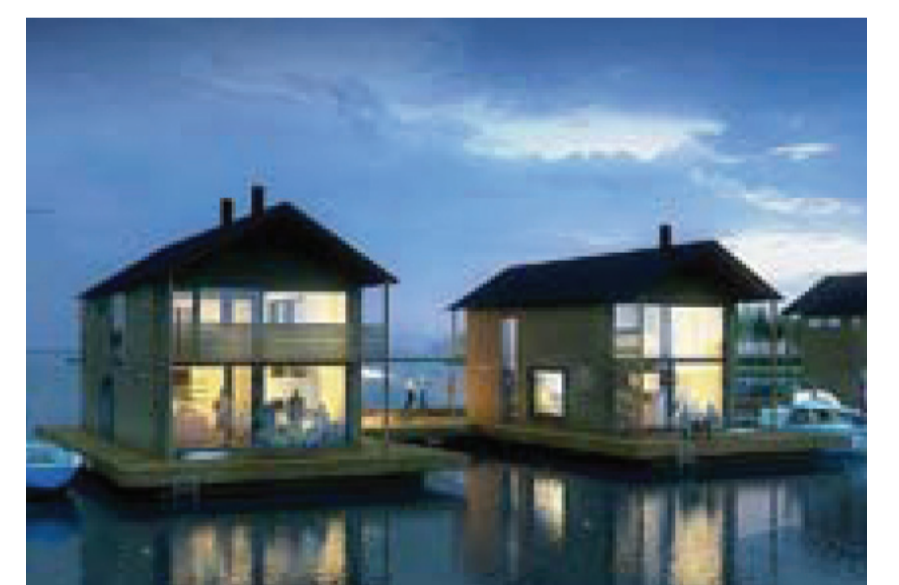
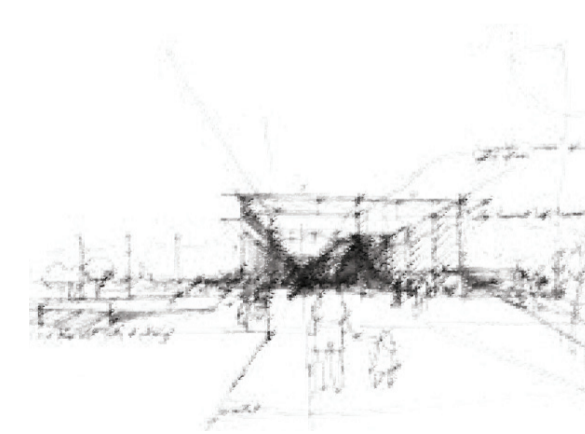
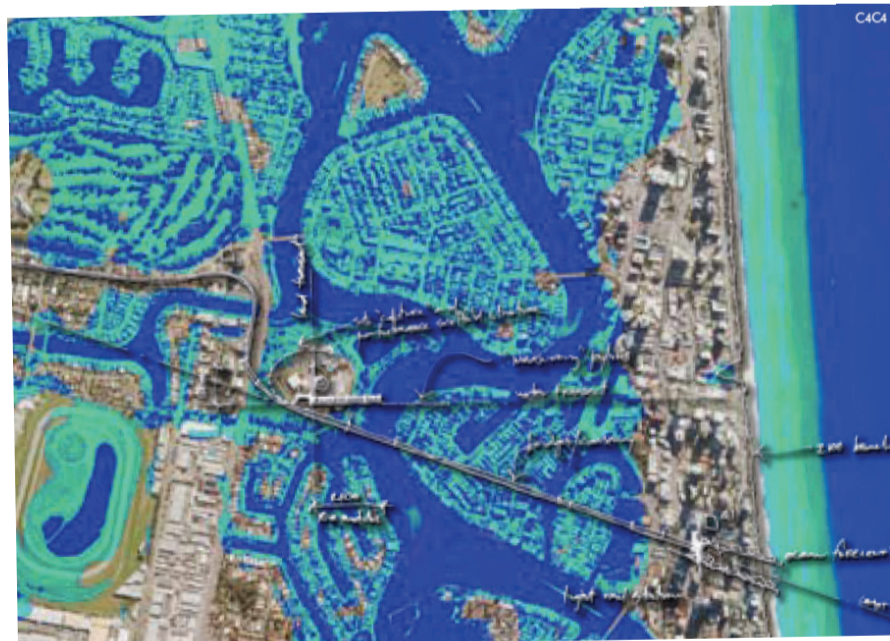
January, 1976  
 B. F. SKINNER

THINK  
 DESIGN  
 ACT  
 IN TIME

# ECOLOGIES OF CLIMATE CHANGE ADAPTATION

ADAPTATION TO CLIMATE CHANGE IN CITIES INCLUDES THE CONSIDERATION OF THE ECOLOGIES OF THE SOCIAL, THE POLITICAL, THE ECONOMIC AND THE CULTURAL. GOLD COAST 2 AND BOONAH 2 ARE TWO AWARD WINNING DESIGN PROJECTS WHICH CONCEPTUALISE THE ADAPTATION OF THESE ECOLOGIES TOWARDS VIABLE FUTURES OF SUSTAINMENT.

**GOLD COAST 2**  
 A CITY MOVE PROPOSAL



**BOONAH 2**  
 A NEW CITY PROPOSAL



### MOVE FROM QUANTITATIVE TO QUALITATIVE

A cultural shift away from quantitative habits of over consumption towards an understanding of qualitative sustainment. It is proposed that this could be achieved through an increase in the shared ownership of land and goods.

# 2040

- MASS MIGRATION
- NEW CITIES
- SALVAGE FROM THE OLD

# 2050

- REVITALISED URBAN
- REMEMBRANCE OF THE OLD

# 2060

## SOCIAL

- CARE SYSTEMS
- CONFLICT PREVENTION
- ENVIRONMENTAL REFUGEE PARTNERSHIPS
- PSYCHOLOGICAL PREPARATION
- CONSERVING MEMORIES
- FROM CULTURAL CONSUMERS TO CULTURAL PRODUCERS
- REDEFINING SOCIAL TRANSACTIONS

## ECONOMIC

- FROM QUANTITATIVE TO QUALITATIVE
- MOVING CITIES
- NEW INDUSTRIES
- FOOD PRODUCTION AND EXCHANGE
- SHARED OWNERSHIP
- RE-STRUCTURING OF WORKING DAY

## CULTURAL

- NEW CITY  
NEW ECONOMY  
NEW CULTURE
- MULTIVERSITY
- INTERNATIONAL COLLABORATIONS
- NEW KNOWLEDGE
- INTER-CULTURAL EXCHANGE RESORT
- CULTURAL FUTURES

## POLITICAL

- ALTERNATIVE MODES OF GOVERNANCE
- REDIRECTING THE POLITICAL TOWARDS SUSTAINMENT

## CITY RECONFIGURATION

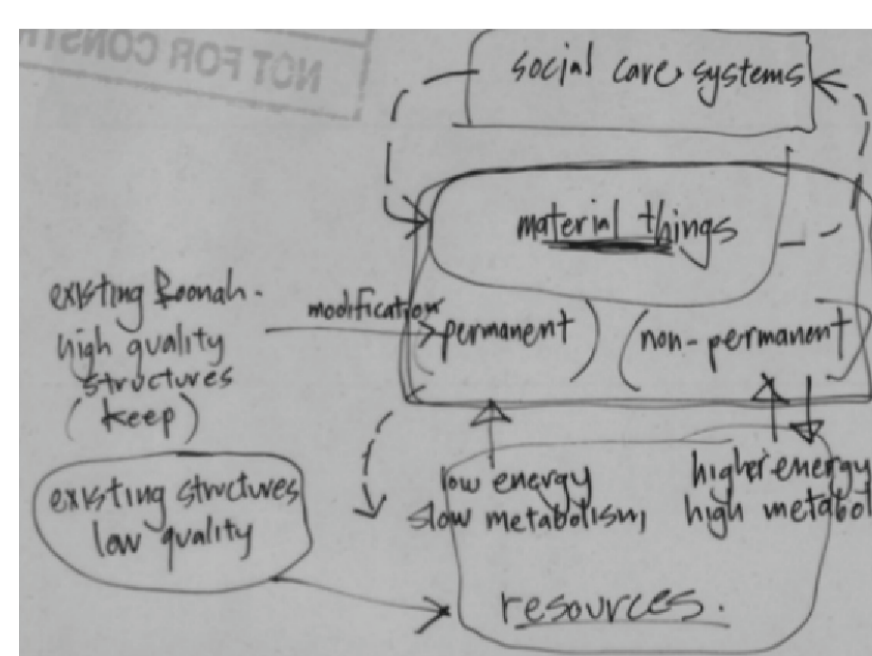
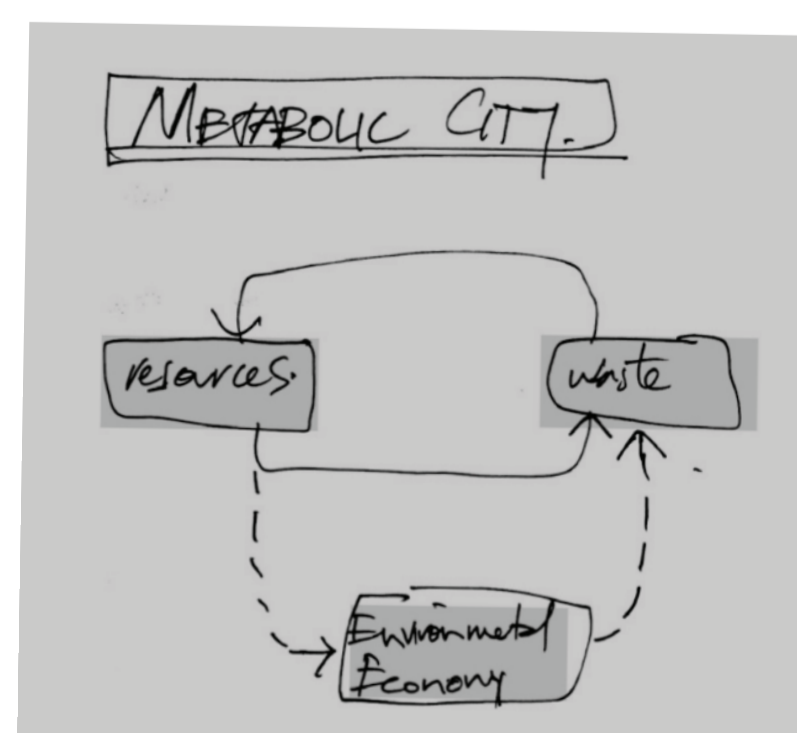
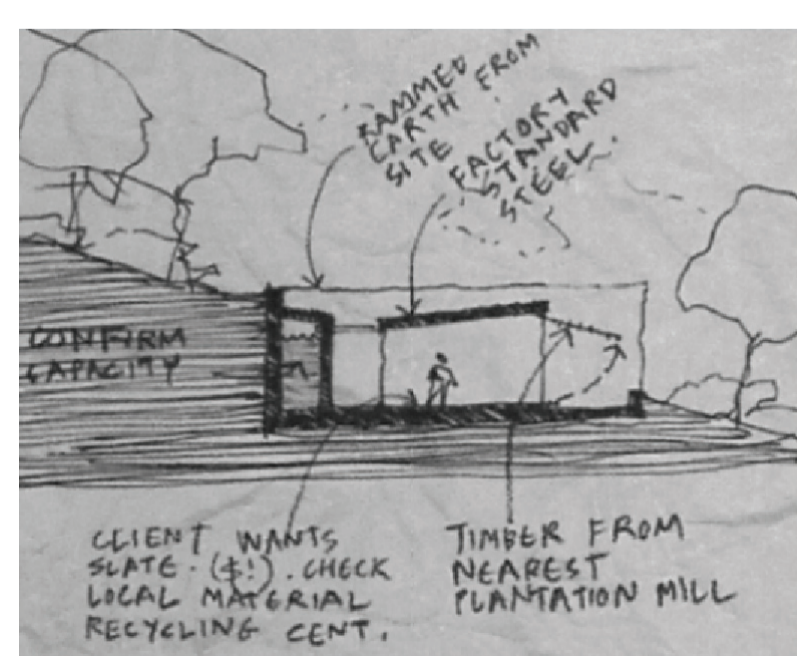
- CITY MOVE
- SATELLITE SUBURBS WITH LINKED CORRIDOR
- FLOATING SUBURBS
- METABOLIC CITY
- ABANDONED AREAS AS REMEMBRANCE
- MINING OF SACRIFICED STRUCTURES
- RE-ORIENTATION OF TRANSPORT HEIRARCHY
- METROFITTING OF EXISTING STRUCTURES

NORA KINNUNEN  
RAE COOPER &  
JIM GALL OF  
Re.D REDIRECTIVE DESIGN

IN COLLABORATION WITH GRIFFITH  
UNIVERSITY  
QUEENSLAND COLLEGE OF ART: MASTER  
OF DESIGN FUTURES PROGRAM

Created to lead change build knowledge and manage adaptive transformation in the face of a changing climate

Created to bank knowledge exchange expertise grow post-national cultures and establish a learning environment beyond the disciplinary and organisational limitations of the modern university



**CARE SYSTEMS**  
The care of the people by the means of communities revitalised and facilitated to care for themselves and others, as well as the care of the environment and futuring things.

